

Groz-Beckert KG

Parkweg 2, 72458 Albstadt, Germany

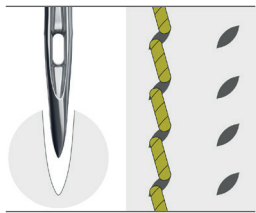
Phone +49 7431 10-0, Fax +49 7431 10-2777

contact-sewing@groz-beckert.com

www.groz-beckert.com

Needle point styles for the desired seam appearance in leather

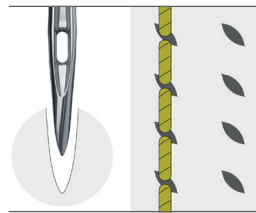
LR-point



Application:

- Decorative lockstitch seams in soft to medium-hard leather
- For all types of leather

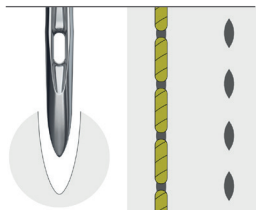
LL-point



Application:

- Straight seams with uniform closed appearance
- For nearly all common types of leather

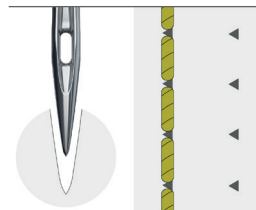
S-point



Application:

- Straight seams with relatively tight stitch formation in leather
- For soft to medium-hard leather
- Seams located directly on an edge

SD-point



Application:

- Straight seam position (slightly irregular)
- For soft leather (clothing leather)
- For multi-directional applications

Both DH and D points are suitable for medium-hard to hard leather and for medium to long stitches.

Needle point styles for interior fabrics

R-point



Application:

- Standard for lockstitch, woven fabrics, coated woven fabrics, artificial leather

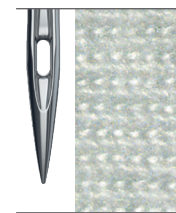
RG-point



Application:

- Standard for chain stitch

FFG-point



Application:

- For general knitted fabrics, woven fabrics made from cotton and/or synthetic fabrics



General recommendations for needle sizes and point styles

Material	Point style		Needle size	
	Decorative seams	Joining seams and multi-directional sewing operations	Needle size	Joining seams and multi-directional sewing operations
Leather (with and without foam lining)	LR, LL, S (defined seam positions), R, RG, SD, DH	R, SD, RG¹	Nm 110–140	Nm 90–110 (depending on the sewing thread size)
Artificial leather (with and without foam lining)	LR, LL, S (defined seam positions), R, RG, SD, DH	R, SD, RG	Nm 110–140	Nm 90–110 (depending on the sewing thread size)
Material combination leather/artificial leather (with and without foam lining)	LR, LL, S (defined seam positions), R, RG, SD, DH	R, SD, RG	Nm 110–140	Nm 90–110 (depending on the sewing thread size)
Material combination woven/felt	R, RG		Nm 110–140 (depending on the material and sewing thread size)	
Material combination leather/felt + cardboard/felt	DH, D		Nm 110–140 (depending on the material and sewing thread size)	
Material combinations leather/textile + artificial leather/textile	R, RG, FFG		Nm 90–120 (depending on the material and sewing thread size)	
Woven fabrics (with and without foam lining)	R, RG, FFG		Nm 90–120 (depending on the material and sewing thread size)	
Knit fabrics (warp and weft knit) with and without foam lining	RG, FFG		Nm 90–110 (depending on the material and sewing thread size)	
Artificial leather	R, RG²		Nm 120–140	
Airbag	R, RG²		Nm 140–180 (depending on the material and sewing thread size)	
Seat belts	R, RG²		Nm 160–230 (depending on the material and sewing thread size)	
Floor mats (edged)	R, RG²		Nm 140–230 (depending on the material and sewing thread size)	

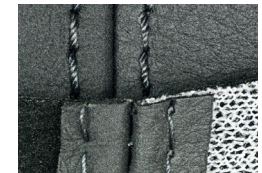
¹ Recommendation: Use the SAN™ 12 needle ² Recommendation: Use the SAN™ 5 needle



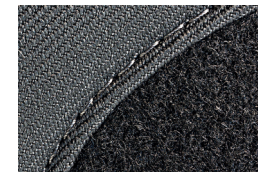
Leather



Artificial leather



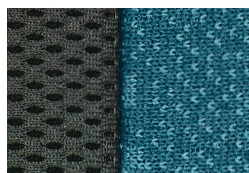
Combination of woven / felt leather



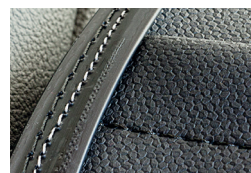
Combination of woven / felt



Woven fabric



Knit fabric



Plastic piping



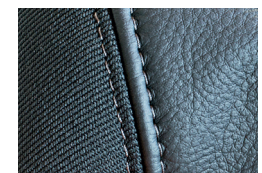
Airbag



Seat belts



Floor mats



Combination of leather / textile